

Silencer Fabrication Parts

It is now possible to fabricate your own custom silencer with Jetex's new range of silencer components:

- 9 different casings (oval and round)
- 5 different end plate designs in varying diameters
- 6 different diameters of perforated tubing
- 9 different sleeve connectors
- 15 different stepped connectors
- Silencer filling (stainless wire wool and E-glass)

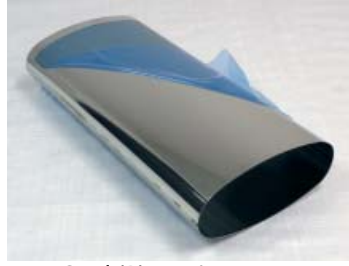


Casings (A-I)

January 2021 [Issue 35]



Oval (A) 100/165mm -
SO10050R



Oval (B) 100/240mm -
SO10150R



Oval (C) 115/185mm - SO11550R



Oval (D) 140/220mm - SO14050R



Oval (E) 140/270mm - SO14150R



Oval (F) 170/240mm - SO17050R



Round (G) 100mm/4" -
SV10050R



Round (H) 125mm/5" -
SV12550R



Round (I) 140mm/5.5" -
SV14050R

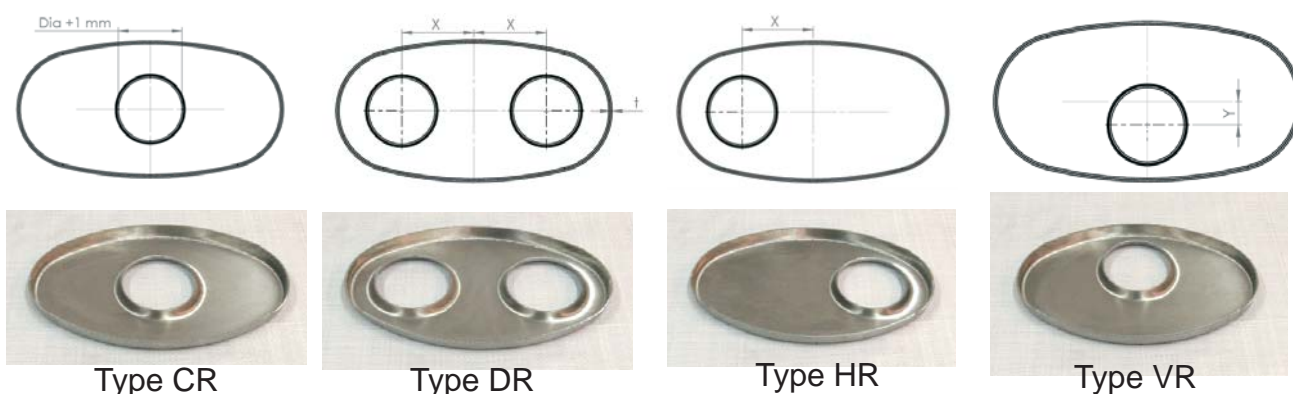
Silencer casings can be trimmed to length. Supplied length is 500mm.

Article	Shape	A (Width)	B (Height)	L (Length)	t	AISI
		mm	mm	mm	mm	
SO10050R	Oval (A)	100	165	500	1.0	304
SO10150R	Oval (B)	100	240	500	1.0	304
SO11550R	Oval (C)	115	185	500	1.0	304
SO14050R	Oval (D)	140	220	500	1.0	304
SO14150R	Oval (E)	140	270	500	1.0	304
SO17050R	Oval (F)	170	240	500	1.0	304
SV10050R	Round (G)	100	100	500	1.0	304
SV12550R	Round (H)	125	125	500	1.0	304
SV14050R	Round (I)	140	140	500	1.0	304



End plates can be TIG or MIG welded to the silencer casings.

End Plates (For Oval Casings A-F)



Article	Casing	A (Width) mm	B (Height) mm	Dia mm	Y mm	X mm	t mm
GO10015BR	A	100	165	blank			1.5
GO10045CR	A	100	165	44.5	0	0	1.5
GO10045DR	A	100	165	44.5	0	40	1.5
GO10045HR	A	100	165	44.5	0	40	1.5
GO10051CR	A	100	165	50.8	0	0	1.5
GO10051DR	A	100	165	50.8	0	40	1.5
GO10051HR	A	100	165	50.8	0	40	1.5
GO10063CR	A	100	165	63.5	0	0	1.5
GO10076CR	A	100	165	76.0	0	0	1.5
GO10115BR	B	100	240	blank			1.5
GO10145CR	B	100	240	44.5	0	0	1.5
GO10145DR	B	100	240	44.5	0	55	1.5
GO10145HR	B	100	240	44.5	0	55	1.5
GO10151CR	B	100	240	50.8	0	0	1.5
GO10151DR	B	100	240	50.8	0	55	1.5
GO10151HR	B	100	240	50.8	0	55	1.5

End Plates (For Oval Casings A-F)

January 2021 [Issue 35]

Article	Casing	A (Width)	B (Height)	Dia	Y	X	t
		mm	mm	mm	mm	mm	mm
GO10163CR	B	100	240	63.5	0	0	1.5
GO10163DR	B	100	240	63.5	0	55	1.5
GO10163HR	B	100	240	63.5	0	55	1.5
GO10176CR	B	100	240	76.0	0	0	1.5
GO11515BR	C	115	185	blank			1.5
GO11545CR	C	115	185	44.5	0	0	1.5
GO11545DR	C	115	185	44.5	0	45	1.5
GO11545HR	C	115	185	44.5	0	45	1.5
GO11545VR	C	115	185	44.5	20	0	1.5
GO11551CR	C	115	185	50.8	0	0	1.5
GO11551DR	C	115	185	50.8	0	45	1.5
GO11551HR	C	115	185	50.8	0	45	1.5
GO11551VR	C	115	185	50.8	15	0	1.5
GO11563CR	C	115	185	63.5	0	0	1.5
GO11563DR	C	115	185	63.5	0	45	1.5
GO11563HR	C	115	185	63.5	0	45	1.5
GO11576CR	C	115	185	76.0	0	0	1.5
GO11589CR	C	115	185	89.0	0	0	1.5
GO14015BR	D	140	220	blank			1.5
GO14045CR	D	140	220	44.5	0	0	1.5
GO14045DR	D	140	220	44.5	0	55	1.5
GO14045HR	D	140	220	44.5	0	55	1.5
GO14045VR	D	140	220	44.5	30	0	1.5
GO14051CR	D	140	220	50.8	0	0	1.5
GO14051DR	D	140	220	50.8	0	55	1.5
GO14051HR	D	140	220	50.8	0	55	1.5
GO14051VR	D	140	220	50.8	25	0	1.5
GO14063CR	D	140	220	63.5	0	0	1.5
GO14063DR	D	140	220	63.5	0	55	1.5
GO14063HR	D	140	220	63.5	0	55	1.5
GO14063VR	D	140	220	63.5	20	0	1.5
GO14076CR	D	140	220	76.0	0	0	1.5
GO14076DR	D	140	220	76.0	0	55	1.5
GO14076HR	D	140	220	76.0	0	55	1.5
GO14076VR	D	140	220	76.0	15	0	1.5
GO14089CR	D	140	220	89.0	0	0	1.5
GO14115BR	E	140	270	blank			1.5
GO14145CR	E	140	270	44.5	0	0	1.5
GO14145DR	E	140	270	44.5	0	70	1.5
GO14145HR	E	140	270	44.5	0	70	1.5
GO14145VR	E	140	270	44.5	30	0	1.5
GO14151CR	E	140	270	50.8	0	0	1.5
GO14151DR	E	140	270	50.8	0	70	1.5
GO14151HR	E	140	270	50.8	0	70	1.5

End Plates (For Oval Casings A-F)

January 2021 [Issue 35]

Article	Casing	A (Width)	B (Height)	Dia	Y	X	t
		mm	mm	mm	mm	mm	mm
GO14151VR	E	140	270	50.8	25	0	1.5
GO14163CR	E	140	270	63.5	0	0	1.5
GO14163DR	E	140	270	63.5	0	70	1.5
GO14163HR	E	140	270	63.5	0	70	1.5
GO14163VR	E	140	270	63.5	20	0	1.5
GO14176CR	E	140	270	76.0	0	0	1.5
GO14176DR	E	140	270	76.0	0	70	1.5
GO14176HR	E	140	270	76.0	0	70	1.5
GO14176VR	E	140	270	76.0	15	0	1.5
GO14189CR	E	140	270	89.0	0	0	1.5
GO14189HR	E	140	270	89.0	0	70	1.5
GO17015BR	F	170	240	blank			1.5
GO17045CR	F	170	240	44.5	0	0	1.5
GO17045DR	F	170	240	44.5	0	60	1.5
GO17045HR	F	170	240	44.5	0	60	1.5
GO17045VR	F	170	240	44.5	45	0	1.5
GO17051CR	F	170	240	50.8	0	0	1.5
GO17051DR	F	170	240	50.8	0	60	1.5
GO17051HR	F	170	240	50.8	0	60	1.5
GO17051VR	F	170	240	50.8	40	0	1.5
GO17063CR	F	170	240	63.5	0	0	1.5
GO17063DR	F	170	240	63.5	0	60	1.5
GO17063HR	F	170	240	63.5	0	60	1.5
GO17063VR	F	170	240	63.5	35	0	1.5
GO17076CR	F	170	240	76.0	0	0	1.5
GO17076DR	F	170	240	76.0	0	60	1.5
GO17076HR	F	170	240	76.0	0	60	1.5
GO17076VR	F	170	240	76.0	30	0	1.5
GO17089CR	F	170	240	89.0	0	0	1.5
GO17089HR	F	170	240	89.0	0	60	1.5
GO17089VR	F	170	240	89.0	25	0	1.5

End Plates (For Round Casings G-I)



Available as a blank or single hole end plate.

Article	Casing	A (Width)	B (Height)	Dia	Y	X	t
		mm	mm	mm	mm	mm	mm
GV10015BR	G	100	-	blank			1.5
GV10045CR	G	100	-	44.5	0	0	1.5
GV10051CR	G	100	-	50.8	0	0	1.5
GV10063CR	G	100	-	63.5	0	0	1.5
GV12515BR	H	125	-	blank			1.5
GV12545CR	H	125	-	44.5	0	0	1.5
GV12551CR	H	125	-	50.8	0	0	1.5
GV12563CR	H	125	-	63.5	0	0	1.5
GV12576CR	H	125	-	76.0	0	0	1.5
GV14015BR	I	140	-	blank			1.5
GV14045CR	I	140	-	44.5	0	0	1.5
GV14051CR	I	140	-	50.8	0	0	1.5
GV14063CR	I	140	-	63.5	0	0	1.5
GV14076CR	I	140	-	76.0	0	0	1.5
GV14089CR	I	140	-	89.0	0	0	1.5

Perforated Tubing



IR42625K
42mm x 625mm



IR45625K
45mm x 625mm



IR48625K
48mm x 625mm



IR51625K
50.8mm x 625mm



IR54625K
54mm x 625mm



IR57625K
57mm x 625mm



IR63625K
63.5mm x 625mm



IR70625K
70mm x 625mm

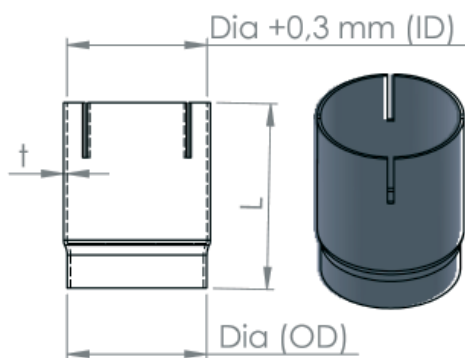


IR76625K
76.5mm x 625mm



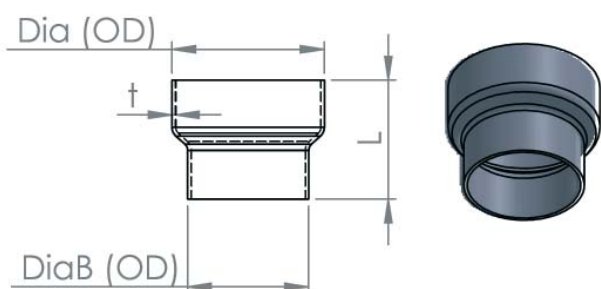
IR89625K
89.5mm x 240mm

Sleeves for End Plates (slotted)



Article	L	Dia	t
	mm	mm	mm
URMS45AR	84	44.5	1.5
URMS48AR	84	48.0	1.5
URMS51AR	84	50.8	1.5
URMS54AR	84	54.0	1.5
URMS57AR	84	57.0	1.5
URMS63AR	84	63.5	1.5
URMS70AR	84	70.0	1.5
URMS76AR	84	76.0	1.5
URMS89AR	84	89.0	1.5

Sleeves for End Plates (stepped)



Article	L	Dia	DiaB	t
	mm	mm	mm	mm
URM4845R	50	48.0	44.5	1.5
URM5145R	50	50.8	44.5	1.5
URM5148R	50	50.8	48.0	1.5
URM5448R	50	54.0	48.0	1.5
URM5748R	50	57.0	48.0	1.5
URM5451R	50	54.0	50.8	1.5
URM5751R	50	57.0	50.8	1.5
URM6351R	50	63.5	50.8	1.5
URM5754R	50	57.0	54.0	1.5
URM6354R	50	63.5	54.0	1.5
URM6357R	50	63.5	57.0	1.5
URM7063R	50	70.0	63.5	1.5
URM7663R	50	76.0	63.5	1.5
URM7670R	50	76.0	70.0	1.5
URM8976R	50	89.0	76.0	1.5

Silencer Filling (Wire wool and E-glass wool)

January 2021 [Issue 35]



E-Glass Wool 150g
U4G150A



Stainless Wool 1.0kg
U4SSW07



Stainless Wool 7.0kg
U4SSW01

HOW MUCH E-GLASS WOOL?

In order to calculate how much E-Glass wool is required to fill a silencer, use the following process alongside the table opposite:

1. Calculate the casing end plate area (a) in dm².
2. Calculate the area of the perforated tubing (b) in dm².
3. Subtract (b) from (a) which equals the usable face area of the silencer (c) in dm².
4. Multiply (c) by the length of the silencer (L) which is the volume of the silencer (v).
5. Multiply the volume (v) by the number of recommended grams per dm² (130).
6. This weight (w) is then divided by 150 to identify how many bags of E-Glass wool are required.

For Example:

Casing = 140/220mm | L = 350mm | Perforated tube = 63.5mm

Recommended wool density = 130g/dm²

Wool in g = (((Casing area - Tubing area) x L) x 130) / 150

(((2.334-0.317) x 3.5) x 130) / 150

Answer = 918g or 6 bags

Wool Data		
	Area dm ²	SS Wool g/mm
Casing 100mm Round	0.724	
Casing 125mm Round	1.188	
Casing 140mm Round	1.474	
Casing 100/165mm Oval	1.274	
Casing 100/240mm Oval	1.915	
Casing 115/185mm Oval	1.609	
Casing 140/220mm Oval	2.334	
Casing 140/270mm Oval	3.102	
Casing 170/240mm Oval	3.388	
42mm Tubing	0.138	0.132
44.5mm Tubing	0.156	0.141
48mm Tubing	0.181	0.151
50.8mm Tubing	0.203	0.160
54mm Tubing	0.230	0.170
57mm Tubing	0.255	0.179
63.5mm Tubing	0.317	0.199
70mm Tubing	0.385	0.220
76mm Tubing	0.453	0.239
89mm Tubing	0.622	0.279

HOW MUCH WIRE WOOL?

Each silencer requires stainless wire wool to wrap around the perforated tubing as a protection against heat damage and to prevent leaking of sound proofing E-glass wool.

In order to calculate how much wire is required to wrap a perforated tube, use the following process:

Recommended coverage; 10g/dm²

Multiply the length of the perforated tubing by the g/mm figure shown in the table above.

Example:

Tubing = 63.5mm

L = 350mm

350 x 0.199 = 70g