

the exhaust system



Universal Parts Catalogue 2024

1.5" to 5" exhaust parts for road, race and rally applications

www.jetex.co.uk

 /jetexexhausts

 #jetexexhaustsuk



jetex
EXHAUSTS | AIR FILTERS | SPORTS CATALYSTS
SINCE 1986

Universal Exhaust Parts

Jetex are probably the U.K's leading supplier of universal exhaust parts for road, race or rally use. Parts are available with diameters of 1.5" (38 mm) to 5" (127 mm) in either stainless or aluminised/mild steel. Unique silencer fabrication allows 2" boxes to withstand temperatures of up to 600 degrees centigrade (for normal road conditions), while our 2.5", 3" and 3.5" boxes can withstand temperatures of up to 800 degrees centigrade (for higher powered engines and when used for race and rally applications).

Choose from a wide range of pipework, bends, silencer boxes, adaptors and tailpipes to construct an almost endless variety of free-flowing, power enhancing custom exhausts to suit your own unique application. Together with our range of Sports Catalysts, Jetex offer the total solution for road or race conditions.

Our 4 inch and 5 inch exhaust parts can be used for truck exhausts, and are ideal for extreme performance applications such as drag racing.

When building an exhaust system, it is important to purchase parts that give good damping effects and flow characteristics in order to obtain the best performance from the engine.

For competition use, it is necessary to consider noise regulations. Jetex 'straight-through' absorption silencers are well insulated with wire wool around the centre tubing to ensure that the insulation does not burn out and raise noise levels.

When assembling a D.I.Y system, the following should be taken into account:

- 4 cyl. engines for street use - 2-3 silencer boxes; for competition use - 1-2 silencer boxes
- 6 cyl. engines for street use - 3-4 silencer boxes; for competition use - 2-3 silencer boxes

For engines with power output of 150bhp or more it is advisable to construct an exhaust from at least 2.5" parts.

Jetex parts are designed to fit together using slip joints. For example, one end of a 30 degree 2" bend will have a 2" inside diameter, while the other end will have an outside diameter of 2".

Dimensions are outside diameter unless stated otherwise.



Universal 1.5" (38mm)



U 01 38 00
Straight length with sleeve,
L=1000 mm



U 01 38 50
Straight length with sleeve,
L=500 mm



U 03 38 90
Short elbow, 90°
CLR= 42 mm



U 02 38 30
Bend 30°
CLR=60 mm



U 02 38 45
Bend 45°
CLR=60 mm



U 02 38 60
Bend 60°
CLR=60 mm



U 02 38 90
Bend 90°
CLR=60 mm



U 02 38 18
Bend 180°
CLR=60 mm

Universal 1.5" (38mm) Stainless Steel



U 01 38 00R
Straight length with sleeve,
L=1000 mm



U 01 38 50R
Straight length with sleeve,
L=500 mm



U 05 38 50R
Flexible straight length
L=500 mm, I/D=1.5"



UFILOK38BMM
Stainless steel flex-connector.
Main body, stainless steel.
End caps, stainless steel
L=101.6 mm/4". Fits over a
1.75" pipe.



U 02 38 30R
Bend 30°
CLR=60 mm



U 02 38 45R
Bend 45°
CLR=60 mm



U 02 38 60R
Bend 60°
CLR=60 mm



U 02 38 90R
Bend 90°
CLR=60 mm



U 02 38 18R
Bend 180°
CLR=60 mm



U 03 38 90R
Short elbow, 90°
CLR=42 mm

Universal 1.65" (42mm)



U 01 42 00
Straight length with sleeve, L=1000 mm



U 01 42 50
Straight length with sleeve, L=500 mm



U 02 42 30
Bend 30°
CLR=75 mm



U 02 42 45
Bend 45°
CLR=75 mm



U 02 42 60
Bend 60°
CLR=75 mm



U 02 42 90
Bend 90°
CLR=75 mm



U 02 42 18
Bend 180°
CLR=75 mm

Universal 1.65" (42mm) Stainless Steel



U 01 42 00R
Straight length with sleeve,
L=1000 mm



U 01 42 50R
Straight length with sleeve,
L=500 mm



U 02 42 30R
Bend 30°
CLR=75 mm



U 02 42 45R
Bend 45°
CLR=75 mm



U 02 42 60R
Bend 60°
CLR=75 mm



U 02 42 90R
Bend 90°
CLR=75 mm



U 02 42 18R
Bend 180°
CLR=75 mm

Universal 1.75" (45mm)

 U 01 45 00 Straight length with sleeve, L=1000 mm	 U 06 45 00 Double-end sleeve I/D 1.75", L=100 mm	 U 03 45 90 Short elbow, 90° CLR=48 mm	 U 02 45 30 Bend 30° CLR=100 mm
 U 01 45 50 Straight length with sleeve, L=500 mm	 U 07 45 00 Stepped sleeve, 45-42-38 mm L= 160 mm	 U 03 45 00 Flanges with gasket	 U 02 45 45 Bend 45° CLR=100 mm
 U 04 45 00 Over-axle bend, L=650 mm CLR=100 mm	 U 33 45 00 Silencer "MEDIUM 45" Oval 100/165 mm, L=420 mm (excl. ends)	 U 02 45 18 Bend 180° CLR=75 mm	 U 02 45 60 Bend 60° CLR=100 mm
 U 41 45 00 Silencer "MIDI 45" Round 100 mm, L=420 mm (excl. ends)	<div style="border: 1px solid black; padding: 5px; text-align: center;">IMAGE TO BE CONFIRMED</div>	 U 40 45 00 Silencer "MICRO 45" Round 80 mm, L=400 mm (excl. ends)	 U 02 45 90 Bend 90° CLR=100 mm
	 U 30 45 00 Silencer "TURBOTIGHT 45" Oval 140/220 mm, L=250 mm (excl. ends)		

Universal 1.75" (45mm) Stainless Steel



 U 01 45 00R Straight length with sleeve, L=1000 mm	 UFILOK45MM Stainless steel flex-connector. Main body, stainless steel. End caps, stainless steel L=152.4 mm/6". Fits over a 1.75" pipe.	 U 06 45 00R Double-end sleeve I/D 1.75", L=100 mm	 U 03 45 90R Short elbow, 90° CLR=48 mm	 U 02 45 30R Bend 30° CLR=100 mm
 U 01 45 50R Straight length with sleeve, L=500 mm	 UFILOK45BMM Stainless steel flex-connector. Main body, stainless steel. End caps, stainless steel L=101.6 mm/4". Fits over a 1.75" pipe.	 U 07 45 00R Stepped sleeve, 45-42-38 mm L= 160 mm	 U 02 45 45R Bend 45° CLR=100 mm	
 U 05 45 50R Flexible straight length L=500 mm, I/D=1.75"	 U 25 45 00 Rondo 45" Round 70 mm, L=260 mm	 U 41 45 00R Silencer "MIDI 45" Round 100 mm, L=420 mm (excl. ends)	 U 02 45 60R Bend 60° CLR=100 mm	
 U 04 45 00R Over-axle bend, L=650 mm CLR=100 mm	 U 30 45 00R Silencer "TURBOTIGHT 45" Oval 140/220 mm, L=250 mm (excl. ends)	 U 40 45 00R Silencer "MICRO 45" Round 76 mm, L=400 mm (excl. ends)	 U 02 45 90R Bend 90° CLR=100 mm	
 U 33 45 00R Silencer "MEDIUM 45" Oval 100/165 mm, L=420 mm (excl. ends)			 U 02 45 18R Bend 180° CLR=75 mm	

Universal 1.89" (48mm)



U 01 48 00
Straight length with sleeve,
L=1000 mm



U 01 48 50
Straight length with sleeve,
L=500 mm



U 06 48 00
Double-end sleeve
I/D 48mm, L=100 mm



U 02 48 30
Bend 30°
CLR=75 mm



U 02 48 45
Bend 45°
CLR=75 mm



U 02 48 60
Bend 60°
CLR=75 mm

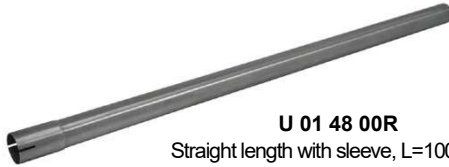


U 02 48 90
Bend 90°
CLR=75 mm



U 02 48 18
Bend 180°
CLR=75 mm

Universal 1.89" (48mm) Stainless Steel



U 01 48 00R
Straight length with sleeve, L=1000 mm



U 01 48 50R
Straight length with sleeve, L=500 mm



U 02 48 30R
Bend 30°
CLR=75 mm



U 02 48 45R
Bend 45°
CLR=75 mm



U 02 48 60R
Bend 60°
CLR=75 mm



U 02 48 90R
Bend 90°
CLR=75 mm



U 02 48 18R
Bend 180°
CLR=75 mm



UFILOK48MM
Stainless steel flex-connector.
Main body, stainless steel.
End caps, stainless steel
L=152.4mm/6". Fits over a
48mm pipe.



UFILOK48BMM
Stainless steel flex-connector.
Main body, stainless steel.
End caps, stainless steel
L=101.6 mm/4". Fits over a
48mm pipe.

Universal 2" (50.8mm)

January 2024 [Issue 38]



U 01 51 00
Straight length with sleeve, L=1000 mm



U 01 51 50
Straight length with sleeve, L=500 mm



U 06 51 20
Double-end sleeve
I/D 2", L=100 mm



U 02 51 30
Bend 30°
CLR=100 mm



U 04 51 17
Over-axle bend, L=660 mm
CLR=100 mm



U 03 51 00
Flanges with gasket



U 02 51 45
Bend 45°
CLR=100 mm



U 02 51 18
Bend 180°
CLR=85 mm



U 07 51 15
Stepped sleeve, 51-48-41 mm



U 03 51 90
Short elbow, 90°
CLR=52 mm



U 02 51 60
Bend 60°
CLR=100 mm



U 93 51 30
Decibel insert
Should be placed inside piping in order to obtain an effective sound damping (note that this also leads to higher backpressure), L=283 mm



U 05 51 00
Compensator
Should be used to prevent pipe fracture between the manifold and exhaust system, L=195 mm



U 02 51 90
Bend 90°
CLR=100 mm



U 40 51 20
Silencer "MICRO 51"
Round 80 mm, L=400 mm
(excl. ends)



U 32 51 00
Silencer "BIG 51"
Oval 115/185 mm, L=420 mm
(excl. ends)



U 33 51 39
Silencer "MEDIUM 51"
Oval 100/165 mm
L=420 mm (excl. ends)



U 41 51 29
Silencer "MIDI 51"
Round 100 mm, L=420 mm
(excl. ends)

**IMAGE
TO BE
CONFIRMED**

U 30 51 00
Silencer "TURBOTIGHT 51"
Oval 140/220 mm
L=250 mm (excl. ends)

**IMAGE
TO BE
CONFIRMED**

U 45 51 00
Silencer "HANDY 51"
Round 125 mm
L=250 mm (excl. ends)



U 35 51 24
Silencer "SMALL 51"
Oval 100/165 mm
L=320 mm (excl. ends)

Universal 2" (50.8mm) Stainless Steel

January 2024 [Issue 38]



U 01 51 00R
Straight length with sleeve,
L=1000 mm



U 01 51 50R
Straight length with sleeve,
L=500 mm



U 05 51 50R
Flexible straight length
L=500 mm, I/D 2"



U 02 51 30R
Bend 30°
CLR=100 mm



U 07 51 00R
Stepped sleeve
51-48-41 mm
L=160 mm



U 06 51 00R
Double-end sleeve
I/D 2", L=100 mm



U 02 51 45R
Bend 45°
CLR=100 mm



U 02 51 60R
Bend 60°
CLR=100 mm



UFILOK515MM
Stainless steel flex-connector.
Main body, stainless steel.
End caps, stainless steel
L=152.4 mm/6". Fits over a 2" pipe.



U 25 51 00
Tailpipe "RONDO 51"
Round 70 mm, L=274 mm



U 02 51 90R
Bend 90°
CLR=100 mm



UFILOK515BMM
Stainless steel flex-connector.
Main body, stainless steel.
End caps, stainless steel
L=101.6 mm/4". Fits over a 2" pipe.



U 23 51 00
Tailpipe "ELLIPS 51"
Oval 70/90 mm, L=274 mm



U 02 51 18R
Bend 180°
CLR=85 mm



U 25 51 10
Tailpipe "RONDO XL 51"
Round 100 mm, L=276 mm



U 03 51 90R
Short elbow, 90°
CLR=52 mm



U 04 51 00R
Over-axle bend,
L=660 mm
CLR=100 mm

Universal 2" (50.8mm) Stainless Steel

January 2024 [Issue 38]



U 40 51 00R
Silencer "MICRO 51"
Round 76 mm,
L=400 mm (excl. ends)



U 35 51 00R
Silencer "SMALL 51"
Oval 100/165 mm,
L=320 mm (excl. ends)



U 36 51 20R
Silencer "OFFSET V 51"
Oval 170/240 mm
L=250 mm (excl. ends)



U 41 51 00R
Silencer "MIDI 51"
Round 100 mm,
L=420 mm (excl. ends)



U 33 51 00R
Silencer "MEDIUM 51"
Oval 100/165 mm,
L=420 mm (excl. ends)



U 36 51 25R
Silencer "OFFSET V+H 51"
Oval 170/240 mm
L=250 mm (excl. ends)



U 45 51 00R
Silencer "HANDY 51"
Round 125 mm
L=250 mm (excl. ends)



U 32 51 00R
Silencer "BIG 51"
Oval 115/185 mm,
L=420 mm (excl. ends)



U 30 51 00R
Silencer "TURBOTIGHT 51"
Oval 140/220 mm
L=250 mm (excl. ends)



U 34 51 DR
Silencer "DUO 51"
Pipe dimensions: 4 x 50.8 mm
Oval 115/185 mm,
L=315 mm (excl. ends)



U 36 51 10R
Silencer "V8 51"
Oval 140/270 mm
L=250 mm (excl. ends)



U 36 51 15R
Silencer "V8 OFFSET H 51"
Oval 140/270 mm
L=250 mm (excl. ends)

Universal 2.13" (54mm) Stainless Steel



U 01 54 00R
Straight length with sleeve,
L=1000 mm



U 01 54 50R
Straight length with sleeve,
L=500 mm



UFILOK54MM
Stainless steel flex-connector.
Main body, stainless steel.
End caps, stainless steel
L=152.4mm/6". Fits over a
54mm pipe.



U 02 54 30R
Bend 30°
CLR=110 mm



U 02 54 45R
Bend 45°
CLR=110 mm



U 02 54 60R
Bend 60°
CLR=110 mm



U 02 54 90R
Bend 90°
CLR=110 mm



UFILOK54BMM
Stainless steel flex-connector.
Main body, stainless steel.
End caps, stainless steel
L=101.6 mm/4". Fits over a
54mm pipe.

Universal 2.25" (57mm) Stainless Steel



U 01 57 00R
Straight length with sleeve, L=1000 mm



U 03 57 90R
Short elbow, 90°
CLR= 58 mm



UFILOK57MM
Stainless steel flex-connector.
Main body, stainless steel.
End caps, stainless steel
L=152.4mm/6". Fits over a
57mm pipe.



U 02 57 30R
Bend 30°
CLR=110 mm



U 02 57 45R
Bend 45°
CLR=110 mm



U 02 57 60R
Bend 60°
CLR=110 mm



U 02 57 90R
Bend 90°
CLR=110 mm



UFILOK57BMM
Stainless steel flex-connector.
Main body, stainless steel.
End caps, stainless steel
L=101.6 mm/4". Fits over a
57mm pipe.

Universal 2.4" (60.3mm) Stainless Steel



U 01 60 00R
Straight length with sleeve,
L=1000 mm



U 02 60 18R
Bend 180°
CLR=100 mm



U 02 60 30R
Bend 30°
CLR=100 mm



U 02 60 45R
Bend 45°
CLR=100 mm



U 02 60 60R
Bend 60°
CLR=100 mm



U 02 60 90R
Bend 90°
CLR=100 mm



UFILOK60MM
Stainless steel flex-connector.
Main body, stainless steel.
End caps, aluminised steel
L=152.4mm/6". Fits over a
60.3mm pipe.



UFILOK60BMM
Stainless steel flex-connector.
Main body, stainless steel.
End caps, aluminised steel
L=101.6 mm/4". Fits over a
60.3mm pipe.

Universal 2.5" (63.5mm)

January 2024 [Issue 38]



U 01 63 00
Straight length with sleeve,
L=1000 mm



U 01 63 50
Straight length with sleeve,
L=500 mm



U 07 63 20
Stepped sleeve
63.5-57-50.8 mm,
L=190 mm



U 06 63 20
Double-end sleeve
I/D 2.5", L=150 mm



U 02 63 30
Bend 30°
CLR=130 mm



U 04 63 21
Over-axle bend,
L=900 mm
CLR=100 mm



U 05 63 50
Flexible straight length,
galvanised steel,
L=500 mm, I/D 2.5"



U 06 63 15
Adaptor Pipe
I/D 2.5" to 2.5" O/D
L=148 mm



U 02 63 45
Bend 45°
CLR=130 mm



U 93 63 30
Decibel insert
Should be placed inside piping in order to
obtain an effective sound damping
(note that this also leads to higher backpressure), L=275 mm



U 02 63 18
Bend 180°
CLR=100 mm



U 03 63 00
Flanges with gasket



U 02 63 60
Bend 60°
CLR=130 mm



U 02 63 90
Bend 90°
CLR=130 mm



U 05 63 00
Compensator
Should be used to prevent pipe fracture between
the manifold and exhaust system, L=185 mm



U 03 63 90
Short elbow, 90°
CLR=63 mm



U 45 63 00
Silencer "HANDY 63"
Round 125 mm
L=250 mm (excl. ends)



U 31 63 35
Silencer "SUPER 63"
Oval 115/185 mm,
L=320 mm (excl. ends)



U 44 63 00
Silencer "TUBEX 63"
Round 100 mm
L=625 mm (excl. ends)



U 33 63 00
Silencer "HEAVY 63"
Oval 140/220 mm
L=500 mm (excl. ends)



U 34 63 51
Silencer "SPLIT 63"
Pipe dimensions: 63.5 mm + 2x50.8 mm
Oval 115/185 mm,
L=320 mm (excl. ends)



U 43 63 37
Silencer "SLIM 63"
Round 125 mm,
L=420 mm (excl. ends)



U 32 63 40
Silencer "BIG 63"
Oval 115/185 mm,
L=420 mm (excl. ends)

Universal 2.5" (63.5mm) Stainless Steel

January 2024 [Issue 38]



U 02 63 30R
Bend 30°
CLR=130 mm



U 01 63 00R
Straight length with sleeve,
L=1000 mm



U 01 63 50R
Straight length with sleeve,
L=500 mm



U 05 63 50R
Flexible straight length
L=500 mm, I/D 2.5"



U 02 63 45R
Bend 45°
CLR=130 mm



U 07 63 00R
Stepped sleeve
63.5-57-50.8 mm, L=190 mm



UFILOK635MM
Stainless steel flex-connector.
Main body, stainless steel.
End caps, stainless steel
L=152.4 mm/6". Fits over a 2.5" pipe.



U 03 63 01R
Three-bolt flange assembly
Both ends 2.5" O/D, L=190 mm



U 02 63 60R
Bend 60°
CLR=130 mm



U 03 63 90R
Short elbow, 90°,
CLR=63 mm



UFILOK635BMM
Stainless steel flex-connector.
Main body, stainless steel.
End caps, stainless steel
L=101.6 mm/4".
Fits over a 2.5" pipe.



U 02 63 90R
Bend 90°
CLR=130 mm



AA635483
Adaptor sleeve
O/D 63.5 mm to
I/D 48 mm
L=105 mm



U 02 63 18R
Bend 180°
CLR=100 mm



U 04 63 00R
Over-axle bend, L=900 mm
CLR=130 mm



AA635511
Adaptor sleeve
O/D 63.5 mm to
I/D 50.8 mm
L=105 mm



U 06 63 00R
Double-end sleeve
I/D 2.5", L=120 mm



AA635553
Adaptor sleeve
O/D 63.5 mm to
I/D 55 mm
L=105 mm



U 23 63 0L
Tailpipe "ELLIPS 63 Left"
Oval 90/120, L= 220 mm

U 23 63 0R
Tailpipe "ELLIPS 63 Right"
Oval 90/120, L=220 mm



U 23 63 20
Tailpipe "SUPERIOR 63"
Oval 90/140 mm, L= 255 mm



U 23 63 10
Tailpipe "ELLIPS XL 63"
Oval 90/120 mm, L= 250 mm



U 26 63 00
Tailpipe "BOLD 63"
Flat oval 85/150 mm, L= 245 mm



U 25 63 10
Tailpipe "RONDO XL 63"
Round 100 mm, L= 265 mm



U 25 63 00
Tailpipe "RONDO 63"
Round 80 mm, L= 275 mm



U 24 63 00
Tailpipe "QUATTRO 63"
Square 70/90 mm, L= 270 mm



U 23 63 00
Tailpipe "ELLIPS 63"
Oval 70/90 mm, L= 270 mm

Universal 2.5" (63.5mm) Stainless Steel

January 2024 [Issue 38]



U 45 63 10R
Silencer "STUBBY 63"
Round 125 mm
L=125 mm (excl. ends)



U 30 63 00R
Silencer "TURBOTIGHT 63"
Oval 140/220 mm, L=250 mm
(excl. ends)



U 36 63 10R
Silencer "V8 63"
Oval 140/270 mm, L=250 mm
(excl. ends)



U 45 63 00R
Silencer "HANDY 63"
Round 125 mm
L=250 mm (excl. ends)



U 31 63 00R
Silencer "SUPER 63"
Oval 115/185 mm,
L=320 mm (excl. ends)



U 36 63 15R
Silencer "V8 OFFSET-H 63"
Oval 140/270 mm, L=250 mm
(excl. ends)



U 46 63 00R
Silencer "HANDY XL 63"
Round 160 mm
L=312 mm (excl. ends)



U 32 63 00R
Silencer "BIG 63"
Oval 115/185 mm,
L=420 mm (excl. ends)



U 36 63 20R
Silencer "OFFSET-V 63"
Oval 170/240 mm, L=250 mm
(excl. ends)



U 43 63 00R
Silencer "SLIM 63"
Round 125 mm, L=420 mm
(excl. ends)



U 33 63 00R
Silencer "HEAVY 63"
Oval 140/220 mm
L=500 mm (excl. ends)



U 36 63 25R
Silencer "OFFSET-H+V 63"
Oval 170/240 mm, L=250 mm
(excl. ends)



U 44 63 00R
Silencer "TUBEX 63"
Round 100 mm, L=625 mm
(excl. ends)



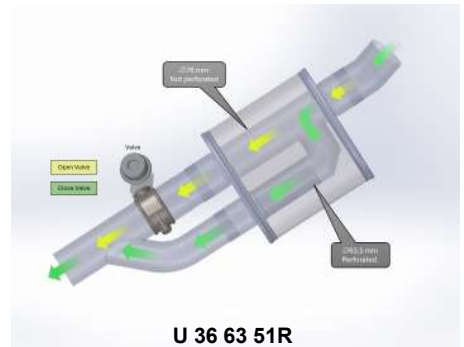
U 32 63 51R
Silencer "DUPLEX 63-51"
Pipe dimensions: 63.5 mm + 2x50.8 mm
Oval 140/220 mm, L=500 mm (excl. ends)



U 34 63 51R
Silencer "SPLIT 63"
Pipe dimensions: 63.5 mm + 2 x 50.8 mm
Oval 115/185 mm,
L=320 mm (excl. ends)



U 11 DJ DD
Silencer "JETEX"
Inlet pipe: 63.5 mm
Oval silencer 140/220, L=420 mm
Tailpipes Twin Round 80 mm, L=190 mm (excl. ends)
Tailpipe width 165 mm
Hanger point (A) 160 mm from end of tailpipes



U 36 63 51R
Silencer "VALVE 63/51"
Oval 140/270 mm, L=250 mm
(excl. ends)



U 34 63 DR
Silencer "DUO 63"
Pipe dimensions: 4 x 63.5 mm
Oval 115/185 mm,
L=315 mm (excl. ends)

Universal 2.75" (70mm) Stainless Steel

January 2024 [Issue 38]



U 01 70 00R
Straight length with sleeve,
L=1000 mm



U 01 70 50R
Straight length with sleeve,
L=500 mm



U 02 70 30R
Bend 30°
CLR=110 mm



U 02 70 45R
Bend 45°
CLR=110 mm



U 02 70 60R
Bend 60°
CLR=110 mm



U 02 70 90R
Bend 90°
CLR=110 mm



UFILOK71MM
Stainless steel flex-connector.
Main body, stainless steel.
End caps, stainless steel
L=152.4 mm. Fits over a 2.75" pipe.



U 03 70 90R
Short elbow, 90°
CLR=62 mm

Universal 3" (76.5mm)

January 2024 [Issue 38]



U 01 76 00
Straight length with sleeve,
L=1000 mm



U 01 76 50
Straight length with sleeve,
L=500 mm



U 05 76 50
Flexible pipe,
galvanised steel,
L=500 mm, I/D 3"



U 02 76 30
Bend 30°
CLR=160 mm



U 04 76 00
Over-axle bend, L=890 mm
CLR=160 mm



U 03 76 90
Short elbow, 90°
CLR=62 mm



U 07 76 00
Stepped sleeve
76-67-64 mm, L=195 mm



U 02 76 45
Bend 45°
CLR=160 mm



U 02 76 60
Bend 60°
CLR=160 mm



U 02 76 18
Bend 180°
CLR=120 mm



U 93 76 30
Decibel insert.
Should be placed inside piping of at least 300 mm in
order to obtain an effective sound damping (note that this also
leads to higher backpressure), L=280 mm



U 03 76 00
Flange with gasket



U 02 76 90
Bend 90°
CLR=160 mm



U 05 76 00
Compensator
Should be used to prevent pipe fracture between
the manifold and exhaust system, L=190 mm
Stainless-Chromium steel



U 45 76 00
Silencer "TURBONETT"
Round 125 mm
L=250 mm (excl. ends)



U 30 76 00
Silencer "TURBOTIGHT"
Oval 140/220 mm
L=250 mm (excl. ends)



U 06 76 20
Double-end sleeve
I/D 3", L=190 mm



U 32 76 00
Silencer "TURBO"
Oval 140/220 mm,
L=500 mm (excl. ends)



U 44 76 00
Silencer "TURBEX"
Round 125 mm,
L=625 mm (excl. ends)



U 33 76 00
Silencer "TURBOLIGHT"
Oval 140/220 mm
L=420 mm (excl. ends)



U 34 76 63
Silencer "SPLIT 76"
Pipe dimensions: 76 mm + 2 x 63.5 mm
Oval 140/220 mm, L=320 mm (excl. ends)

Universal 3" (76.5mm) Stainless Steel

January 2024 [Issue 38]



U 01 76 00R
Straight length with sleeve,
L=1000 mm



U 01 76 50R
Straight length with sleeve,
L=500 mm



U 05 76 50R
Flexible straight length
L=500 mm. I/D 3"



U 02 76 30R
Bend 30°
CLR=160 mm



U 04 76 00R
Over-axle bend, L=890 mm



U 03 76 90R
Short elbow, 90°
CLR=62 mm



U 02 76 45R
Bend 45°
CLR=160 mm



UFILOK765BMM
Stainless steel flex-connector.
Main body, stainless steel.
End caps, stainless steel
L=101.6 mm/4".
Fits over a 2.5" pipe.



U 07 76 00R
Stepped sleeve
76-67-64 mm, L=195 mm



U 03 76 01R
Three-bolt flange assembly
Both ends 3" O/D, L=190 mm



U 02 76 60R
Bend 60°
CLR=160 mm



U 06 76 00R
Double-end sleeve,
L=150 mm I/D 3"



U 02 76 90R
Bend 90°
CLR=160 mm



UFILOK765MM
Stainless steel flex-connector.
Main body, stainless steel.
End caps, stainless steel
L=152.4 mm/6".
Fits over a 2.5" pipe.



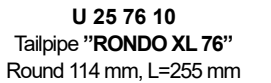
AA761653
Adaptor sleeve
O/D 76.5 mm to
I/D 65 mm
L=120 mm



U 02 76 18R
Bend 180°
CLR=120 mm



U 26 76 00
Tailpipe "BOLD 76"
Flat oval 85/150 mm, L=240 mm



U 25 76 10
Tailpipe "RONDO XL 76"
Round 114 mm, L=255 mm



AA761638
Adaptor sleeve
O/D 76.5 mm to
I/D 63.5 mm
L=115 mm



U 23 76 00
Tailpipe "ELLIPS 76"
Oval 90/120 mm, L=265 mm



U 25 76 00
Tailpipe "RONDO 76"
Round 100 mm, L=245 mm



AA761603
Adaptor sleeve
O/D 76.5 mm to
I/D 60.3 mm
L=120 mm



U 23 76 20
Tailpipe "SUPERIOR 76"
Oval 90/140 mm, L=255 mm

Universal 3" (76.5mm) Stainless Steel

January 2024 [Issue 38]



U 45 76 00R
Silencer "TURBONETT"
Round 125 mm,
L=250 mm (excl. ends)



U 31 76 00R
Silencer "SUPER 76"
Oval 115/185 mm, L=312 mm
(excl. ends)



U 36 76 10R
Silencer "V8 76"
Oval 140/270 mm,
L=250 mm (excl. ends)



U 45 76 10R
Silencer "STUBBY 76"
Round 140 mm, L=140 mm
(excl. ends)



U 30 76 00R
Silencer "TURBOTIGHT"
Oval 140/220 mm
L=250 mm (excl. ends)



U 36 76 15R
Silencer "V8 OFFSET 76"
Oval 140/270 mm,
L=250 mm (excl. ends)



U 44 76 00R
Silencer "TURBEX"
Round 125 mm,
L=625 mm (excl. ends)



U 33 76 00R
Silencer "TURBOLIGHT"
Oval 140/220 mm
L=420 mm (excl. ends)



U 36 76 20R
Silencer "OFFSET-V 76"
Oval 170/240 mm,
L=250 mm (excl. ends)



U 32 76 63R
Silencer "DUPLEX 76-63"
Pipe dimensions: 76 mm + 2 x 63.5 mm
Oval 140/220 mm,
L=500 mm (excl. ends)



U 32 76 00R
Silencer "TURBO"
Oval 140/220 mm,
L=500 mm (excl. ends)



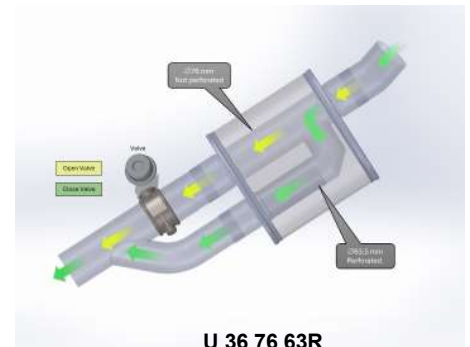
U 36 76 25R
Silencer "OFFSET-H+V 76"
Oval 170/240 mm,
L=250 mm (excl. ends)



U 34 76 DR
Silencer "DUO 76"
Pipe dimensions: 4 x 76 mm
Oval 140/220 mm,
L=315 mm (excl. ends)



U 34 76 63R
Silencer "SPLIT 76"
Pipe dimensions: 76 mm + 2 x 63.5 mm
Oval 140/220 mm,
L=320 mm (excl. ends)



U 36 76 63R
Silencer "VALVE 76/63"
Oval 140/270 mm,
L=250 mm (excl. ends)

Universal 3.5" (89.5mm)

January 2024 [Issue 38]



U 02 89 30
Bend 30°
CLR=160 mm



U 02 89 45
Bend 45°
CLR=160 mm



U 02 89 60
Bend 60°
CLR=160 mm



U 02 89 90
Bend 90°
CLR=160 mm



U 45 89 00
Silencer "GRANDONETT"
Round 140 mm
L=250 mm (excl. ends)



U 30 89 00
Silencer "GRANDOTIGHT"
Oval 140/220 mm
L=250 mm (excl. ends)



U 01 89 00
Straight length with sleeve,
L=1000 mm



U 01 89 50
Straight length with sleeve,
L=500 mm



U 03 89 90
Short elbow, 90°
CLR=76 mm



U 05 89 50
Flexible length,
galvanised steel,
L=500 mm. I/D 3.5"



U 06 89 00
Double-end sleeve
I/D 3.5", L=190 mm



U 07 89 00
Stepped sleeve
89-80-76 mm, L=195 mm



U 32 89 00
Silencer "GRAND"
Oval 140/220 mm
L=500 mm (excl. ends)

Universal 3.5" (89.5mm) Stainless Steel



U 01 89 00R
Straight length with sleeve,
L=1000 mm



U 01 89 50R
Straight length with sleeve,
L=500 mm



U 05 89 50R
Flexible straight length
L=500 mm. I/D 3.5"



U 02 89 30R
Bend 30°
CLR=160 mm



U 07 89 00R
Stepped sleeve
89-79-76 mm, L=195 mm



U 06 89 00R
Double-end sleeve
I/D 3.5", L=190 mm



U 25 89 10
Tailpipe "RONDO XL 89"
Round 114 mm, L=265 mm



U 02 89 45R
Bend 45°
CLR=160 mm



U 45 89 00R
Silencer "GRANDONETT 89"
Round 140 mm
L=250 mm (excl. ends)



U 36 89 10R
Silencer "V8 89"
Oval 140/270 mm,
L=250 mm (excl. ends)



U 02 89 60R
Bend 60°
CLR=160 mm



U 45 89 10R
Silencer "STUBBY 89"
Round 160 mm,
L=160 mm (excl. ends)



U 36 89 15R
Silencer "V8 OFFSET-H 89"
Oval 140/270 mm,
L=250 mm (excl. ends)



U 02 89 90R
Bend 90°
CLR=160 mm



U 31 89 00R
Silencer "SUPER 89"
Oval 115/185 mm,
L=312 mm (excl. ends)



U 36 89 20R
Silencer "OFFSETV 89"
Oval 170/240 mm,
L=250 mm (excl. ends)



U 03 89 90R
Short elbow, 90°
CLR=76 mm



U 30 89 00R
Silencer "GRANDOTIGHT 89"
Oval 140/220 mm
L=250 mm (excl. ends)



U 36 89 25R
Silencer "OFFSETH+V 89"
Oval 170/240 mm,
L=250 mm (excl. ends)



UFILOK89S
Stainless steel flex-connector.
Main body, stainless steel.
End caps, aluminised steel
L=101.6 mm/4".
Fits over a 3.5" pipe.



U 32 89 00R
Silencer "GRAND 89"
Oval 140/220 mm
L=500 mm (excl. ends)

Universal 4" (101.6mm)



U 02 02 30
Bend 30°
CLR=220 mm



U 03 02 00
Short elbow, 90°
CLR=85 mm



U 01 02 00
Straight length with sleeve,
L=1000 mm



U 07 07 26
Stepped sleeve
101.6-76 mm, L=200 mm



U 02 02 45
Bend 45°
CLR=220 mm



U 07 02 00
Stepped sleeve
101.6-89 mm, L=200 mm



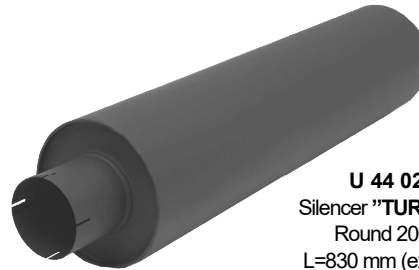
U 43 02 00
Silencer "GRANDONETT XL"
Round 300 mm
L=480 mm (excl. ends)



U 02 02 60
Bend 60°
CLR=220 mm



U 06 02 00
Double-end sleeve
I/D 4", L=220 mm



U 44 02 00
Silencer "TURBEX-XL"
Round 200 mm
L=830 mm (excl. ends)



U 02 02 90
Bend 90°
CLR=220 mm

Universal 4" (101.6mm) Stainless Steel



U 02 02 30R
Bend 30°
CLR=160 mm



U 07 02 00R
Stepped sleeve
101.6-89 mm, L=200 mm



U 01 02 00R
Straight length with sleeve,
L=1000 mm



U 02 02 45R
Bend 45°
CLR=160 mm



U 06 02 00R
Double-end sleeve
I/D 4", L=220 mm



U 43 02 00R
Silencer "GRANDONETT XL"
Round 300 mm
L=480 mm (excl. ends)



UFILOK1016LONG
Stainless steel flex-connector.
Main body, stainless steel.
End caps, stainless steel
L=203 mm/8".
Fits over a 4" pipe.



U 02 02 60R
Bend 60°
CLR=160 mm



UFILOK1016SHORT
Stainless steel soft flex-connector.
Main body, stainless steel.
End caps, stainless steel
L=101.6 mm/4".
Fits over a 4" pipe.



U 02 02 90R
Bend 90°
CLR=160 mm



U 44 02 00R
Silencer "TURBEX-XL"
Round 200 mm
L=830 mm (excl. ends)



UFILOK1016MM
Stainless steel flex-connector.
Main body, stainless steel.
End caps, stainless steel
L=101.6 mm/4".
Fits over a 4" pipe.



U 03 02 00R
Short elbow, 90°
CLR=85 mm

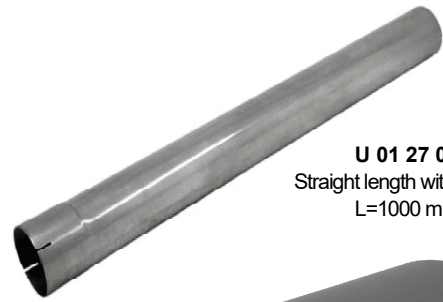
Universal 5" (127mm)



U 02 27 30
Bend 30°
CLR=285 mm



U 03 27 90
Short elbow, 90°
CLR=100 mm



U 01 27 00
Straight length with sleeve,
L=1000 mm



U 02 27 45
Bend 45°
CLR=285 mm



U 07 27 00
Stepped sleeve
127-101.6 mm, L=270 mm



U 43 27 00
Silencer "GRANDONETXXL"
Round 300 mm
L=480 mm (excl. ends)



U 02 27 60
Bend 60°
CLR=285 mm



U 06 27 00
Double-end sleeve
I/D 5", L=260 mm



U 44 27 00
Silencer "TURBEX-XXL"
Round 200 mm
L=830 mm (excl. ends)



U 02 27 90
Bend 90°
CLR=285 mm

Universal 5" (127mm) Stainless Steel



U 02 27 30R
Bend 30°
CLR=285 mm



U 03 27 90R
Short elbow, 90°
CLR=100 mm



U 01 27 00R
Straight length with sleeve,
L=1000 mm



U 02 27 45R
Bend 45°
CLR=285 mm



U 07 27 00R
Stepped sleeve
127-101.6 mm, L=195 mm



U 43 27 00R
Silencer "GRANDONETXXL"
Round 300 mm
L=480 mm (excl. ends)



U 02 27 60R
Bend 60°
CLR=285 mm



U 06 27 00R
Double-end sleeve
I/D 3 1/2", L=190 mm



U 44 27 00R
Silencer "TURBEX-XXL"
Round 200 mm
L=830 mm (excl. ends)



U 02 27 90R
Bend 90°
CLR=285 mm

Universal Fittings

January 2024 [Issue 38]



U 82 62 50
Rubber



U 82 62 53
Rubber (12mm)



U 82 62 54
Rubber (12mm)



U 82 62 56
Rubber



U 82 62 57
Rubber



U 82 62 58
Rubber (10mm)



U 82 62 59
Rubber



U 82 62 60
Rubber



U 82 62 65
Rubber (10mm)



U 82 62 70
Rubber (12mm)



U 72 45 65
Bracket for pipes from 45-65 mm



U 81 23 08
Rubber cushion M8



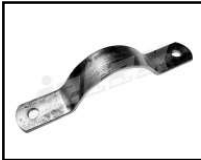
U 84 70 25
Hanging strap



U 83 60 25
Hanger Bracket (galvanised steel)



U 83 90 45
Hanger bracket (galvanised steel)



U 83 15 03
Bracket



U 69 01 00R
Lambda Boss
Stainless Steel
M18 x 1.5



U 69 01 00
Lambda Boss
Chromium Steel
M18 x 1.5



U 69 02 00
Lambda Plug
Chromed Mild Steel
M18 x 1.5



U 69 02 01
Lambda Plug
Chromium Steel
M18 x 1.5



U 69 01 01
Lambda Plug
Chromium Steel
45 Degree
M18 x 1.5

Hanger Tube 12mm x 1m

Part No.
UM 11 20 15 (mild)
UM 11 20 15R (stainless)



U 83 20 03R
Flat Bar with Hooks
Stainless Steel



U 83 12 10R 10mm
U 83 12 12R 12mm
Hanger Set Stainless Steel

Hanger Bar 10mm x 1m

Part No.
UM 3R S0 10R*
* stainless steel only




U 83 25 08R
M8 Hanger Bracket
Stainless Steel
(to be welded to piping or silencers as a mounting point)

Universal Fittings

January 2024 [Issue 38]


Y-Pieces



Part No.	A	B
U 90 51 42	50.8	41.5
U 90 51 45/R	50.8	44.5
U 90 51 51/R	50.8	50.8
U 90 57 45	57	44.5
U 90 57 48	57	48
U 90 63 48	63.5	48
U 90 63 51/R	63.5	50.8
U 90 63 63/R	63.5	63.5
U 90 76 63/R	76	63.5
U 90 76 76R*	76	76
U 90 89 76R*	89	76
U 90 02 89R*	101.6	89


* stainless only

Galvanised U Clamps



Part No.	Fits Pipe Dia.
U 70 42 10	42 mm
U 70 45 10	45 mm
U 70 48 10	48 mm
U 70 52 10	52 mm
U 70 54 10	54 mm
U 70 58 10	58 mm
U 70 60 10	60 mm
U 70 64 10	64 mm
U 70 67 10	67 mm
U 70 73 10	73 mm
U 70 80 10	80 mm
U 70 83 10	83 mm
U 70 92 10	92 mm


Spacers



Should be used to reduce pipework diameter, e.g. AP63-60 will fit into the female end of a 63.5mm pipe and then over a 60mm pipe.

Part No.	O/D	I/D
UA45-40	45	40
UA45-42	45	42
UA51-45	50.8	45
UA51-48	50.8	48
UA51-50	50.8	50
UA55-50	55	50
UA55-51	55	51
UA55-52	55	52
UA55-54	55	54
UA57-51	57	51
UA57-55	57	55
UA60-55	60	55
UA63-57	63.5	57
UA63-60	63.5	60
UA65-60	65	60
UA70-65	70	65

X-Pieces



Part No.	A
U 90 51 XR	50.8
U 90 63 XR	63.5
U 90 76 XR	76

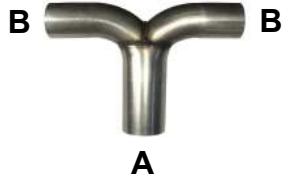
Stainless Steel

Galvanised Ring Clamps



Part No.	Fits Pipe Dia.
U 71 48 10	48 mm
U 71 54 10	54 mm
U 71 67 10	67 mm

T-Pieces




Part No.	A	B
U 91 63 51	63.5	50.8
U 91 63 63	63.5	63.5
U 91 76 63	76	63.5

Mild Steel

Part No.	A	B
U 91 63 51R	63.5	50.8
U 91 63 63R	63.5	63.5
U 91 76 63R	76	63.5
U 91 76 76R	76	76
U 91 89 76R	89	76

Stainless Steel

Stainless Ring Clamps

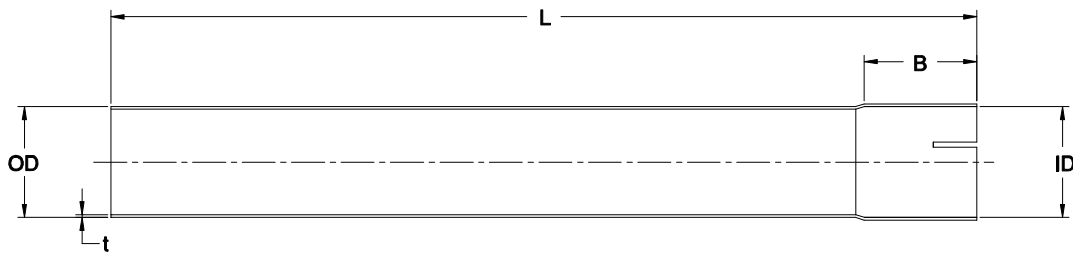


Part No.	Fits Pipe Dia.
UBK048R	48 mm
UBK054R	54 mm
UBK057R	57 mm
UBK060R	60 mm
UBK063R	63 mm
UBK067R	67 mm
UBK073R	73 mm
UBK079R	79 mm
UBK092R	92 mm
UBK105R	105 mm
UBK130R	130 mm

Technical Pages

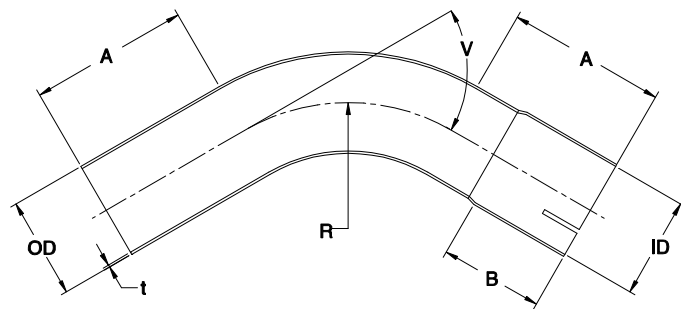
The following pages provide parts dimensions for pipework, silencers and tailpipes within the Jetex Universal Parts range. 'R' denotes stainless steel option. Otherwise parts are mild or aluminised steel.

Straight Lengths (1.5" to 5"):



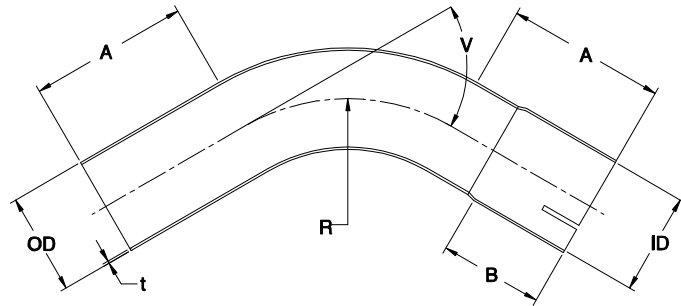
Part No.	Description	O/D	I/D	L	B	t
U013800/R	Pipe with sleeve 1m	38.0	38.3	990	65	1.5
U013850/R	Pipe with sleeve 0.5m	38.0	38.3	490	65	1.5
U014200/R	Pipe with sleeve 1m	42.0	42.3	990	65	1.5
U014250/R	Pipe with sleeve 0.5m	42.0	42.3	490	65	1.5
U014500/R	Pipe with sleeve 1m	44.5	44.8	990	65	1.5
U014550/R	Pipe with sleeve 0.5m	44.5	44.8	490	65	1.5
U014800/R	Pipe with sleeve 1m	48.0	48.3	990	65	1.5
U014850/R	Pipe with sleeve 0.5m	48.0	48.3	490	65	1.5
U015100/R	Pipe with sleeve 1m	50.8	51.1	990	65	1.5
U015150/R	Pipe with sleeve 0.5m	50.8	51.1	490	65	1.5
U015400R	Pipe with sleeve 1m	54.0	54.3	990	65	1.5
U015450R	Pipe with sleeve 0.5m	54.0	54.3	490	65	1.5
U015700R*	Pipe with sleeve 1m	57.0	57.3	990	65	1.5
U016000R*	Pipe with sleeve 1m	60.3	60.5	990	65	1.5
U016300/R	Pipe with sleeve 1m	63.5	63.8	990	65	1.5
U016350/R	Pipe with sleeve 0.5m	63.5	63.8	490	65	1.5
U017000R*	Pipe with sleeve 1m	70.0	70.3	990	65	1.5
U017050R*	Pipe with sleeve 0.5m	70.0	70.3	490	65	1.5
U017600/R	Pipe with sleeve 1m	76.1	76.4	990	75	1.5
U017650/R	Pipe with sleeve 0.5m	76.1	76.4	490	75	1.5
U018900/R	Pipe with sleeve 1m	88.9	89.3	990	75	1.5
U018950/R	Pipe with sleeve 0.5m	88.9	89.3	490	75	1.5
U010200/R	Pipe with sleeve 1m	101.6	102.1	990	90	1.5
U012700/R	Pipe with sleeve 1m	127.0	127.5	990	110	2.0
<i>Tolerance</i>		$\pm 0.1\text{mm}$	$\pm 0.2\text{mm}$	$\pm 5\text{mm}$	$\pm 5\text{mm}$	$\pm 0.1\text{mm}$

Bends (30-90 Degree) (1.5" to 5"):



Part No.	Description	O/D	I/D	A	B	R	V	t
U023830/R	Bend with sleeve, 30°	38.0	38.3	75	65	60	30	1.5
U023845/R	Bend with sleeve, 45°	38.0	38.3	75	65	60	45	1.5
U023860/R	Bend with sleeve, 60°	38.0	38.3	75	65	60	60	1.5
U023890/R	Bend with sleeve, 90°	38.0	38.3	75	65	60	90	1.5
U024230/R	Bend with sleeve, 30°	42.0	42.3	84	65	75	30	1.5
U024245/R	Bend with sleeve, 45°	42.0	42.3	84	65	75	45	1.5
U024260/R	Bend with sleeve, 60°	42.0	42.3	84	65	75	60	1.5
<i>Tolerance</i>		$\pm 0.1\text{mm}$	$\pm 0.2\text{mm}$	$\pm 5\text{mm}$	$\pm 5\text{mm}$	$\pm 2\text{mm}$	$\pm 2^\circ$	$\pm 0.1\text{mm}$

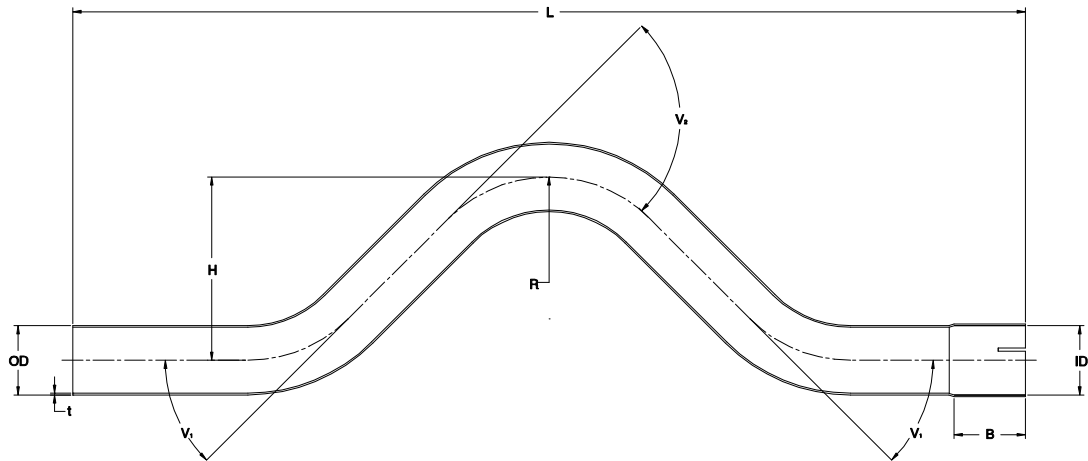
Bends (30-90 Degree) (1.5" to 5") cont...



Part No.	Description	O/D	I/D	A	B	R	V	t
U024290/R	Bend with sleeve, 90°	42.0	42.3	84	65	75	90	1.5
U024530/R	Bend with sleeve, 30°	44.5	44.8	100	65	100	30	1.5
U024545/R	Bend with sleeve, 45°	44.5	44.8	100	65	100	45	1.5
U024560/R	Bend with sleeve, 60°	44.5	44.8	100	65	100	60	1.5
U024590/R	Bend with sleeve, 90°	44.5	44.8	100	65	100	90	1.5
U024830/R	Bend with sleeve, 30°	48.3	48.6	110	65	75	30	1.5
U024845/R	Bend with sleeve, 45°	48.3	48.6	110	65	75	45	1.5
U024860/R	Bend with sleeve, 60°	48.3	48.6	110	65	75	60	1.5
U024890/R	Bend with sleeve, 90°	48.3	48.6	110	65	75	90	1.5
U025130/R	Bend with sleeve, 30°	50.8	51.1	100	65	100	30	1.5
U025145/R	Bend with sleeve, 45°	50.8	51.1	100	65	100	45	1.5
U025160/R	Bend with sleeve, 60°	50.8	51.1	100	65	100	60	1.5
U025190/R	Bend with sleeve, 90°	50.8	51.1	100	65	100	90	1.5
U025430/R	Bend with sleeve, 30°	54.0	54.3	95	65	110	30	1.5
U025445/R	Bend with sleeve, 45°	54.0	54.3	95	65	110	45	1.5
U025460/R	Bend with sleeve, 60°	54.0	54.3	95	65	110	60	1.5
U025490/R	Bend with sleeve, 90°	54.0	54.3	95	65	110	90	1.5
U025730R*	Bend with sleeve, 30°	57.0	57.3	100	65	110	30	1.5
U025745R*	Bend with sleeve, 45°	57.0	57.3	100	65	110	45	1.5
U025760R*	Bend with sleeve, 60°	57.0	57.3	100	65	110	60	1.5
U025790R*	Bend with sleeve, 90°	57.0	57.3	100	65	110	90	1.5
U026030R*	Bend with sleeve, 30°	60.3	60.6	120	65	100	30	1.5
U026045R*	Bend with sleeve, 45°	60.3	60.6	120	65	100	45	1.5
U026060R*	Bend with sleeve, 60°	60.3	60.6	120	65	100	60	1.5
U026090R*	Bend with sleeve, 90°	60.3	60.6	120	65	100	90	1.5
U026330/R	Bend with sleeve, 30°	63.5	63.8	100	65	130	30	1.5
U026345/R	Bend with sleeve, 45°	63.5	63.8	100	65	130	45	1.5
U026360/R	Bend with sleeve, 60°	63.5	63.8	100	65	130	60	1.5
U026390/R	Bend with sleeve, 90°	63.5	63.8	100	65	130	90	1.5
U027030R*	Bend with sleeve, 30°	70.0	70.3	130	75	110	30	1.5
U027045R*	Bend with sleeve, 45°	70.0	70.3	130	75	110	45	1.5
U027060R*	Bend with sleeve, 60°	70.0	70.3	130	75	110	60	1.5
U027090R*	Bend with sleeve, 90°	70.0	70.3	130	75	110	90	1.5
U027630/R	Bend with sleeve, 30°	76.1	76.4	115	75	160	30	1.5
U027645/R	Bend with sleeve, 45°	76.1	76.4	115	75	160	45	1.5
U027660/R	Bend with sleeve, 60°	76.1	76.4	115	75	160	60	1.5
U027690/R	Bend with sleeve, 90°	76.1	76.4	115	75	160	90	1.5
U028930/R	Bend with sleeve, 30°	88.9	89.3	165	75	160	30	1.5
U028945/R	Bend with sleeve, 45°	88.9	89.3	165	75	160	45	1.5
U028960/R	Bend with sleeve, 60°	88.9	89.3	165	75	160	60	1.5
U028990/R	Bend with sleeve, 90°	88.9	89.3	165	75	160	90	1.5
U020230/R	Bend with sleeve, 30°	101.6	102.1	200	90	220	30	1.5
U020245/R	Bend with sleeve, 45°	101.6	102.1	200	90	220	45	1.5
U020260/R	Bend with sleeve, 60°	101.6	102.1	200	90	220	60	1.5
U020290/R	Bend with sleeve, 90°	101.6	102.1	200	90	220	90	1.5
U022730/R	Bend with sleeve, 30°	127.0	127.5	250	110	285	30	2.0
U022745/R	Bend with sleeve, 45°	127.0	127.5	250	110	285	45	2.0
U022760/R	Bend with sleeve, 60°	127.0	127.5	250	110	285	60	2.0
U022790/R	Bend with sleeve, 90°	127.0	127.5	250	110	285	90	2.0
	Tolerance	±0.1mm	±0.2mm	±5mm	±5mm	±2mm	±2°	±0.1mm

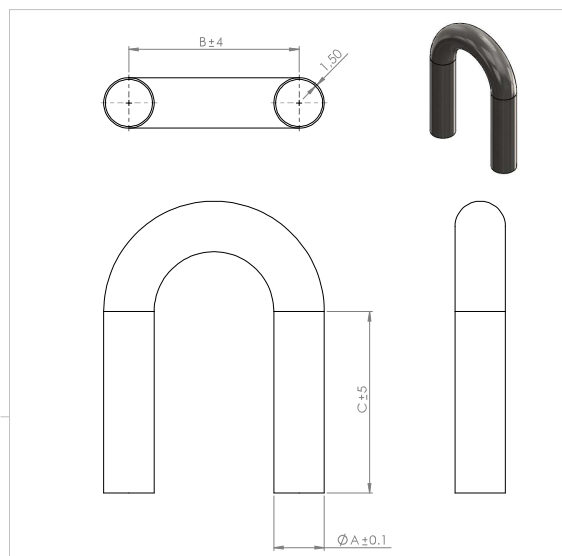
*stainless steel only

Over-axle Bends (1.75" to 3"):



Part No.	Description	OD	ID	L	H	B	R	V1	V2	t
U044500/R	Over-axle	44.5	44.8	650	190	65	100	60	120	1.5
U045117/100R	Over-axle	50.8	51.1	660	185	65	100	60	120	1.5
U046321/300R	Over-axle	63.5	63.8	900	170	65	130	45	90	1.5
U047600/R	Over-axle	76.1	76.4	900	180	75	160	45	90	1.5
<i>Tolerance</i>		$\pm 0.1mm$	$\pm 0.2mm$	$\pm 10mm$	$\pm 5mm$	$\pm 5mm$	$\pm 2mm$	$\pm 2^\circ$	$\pm 2^\circ$	$\pm 0.1mm$

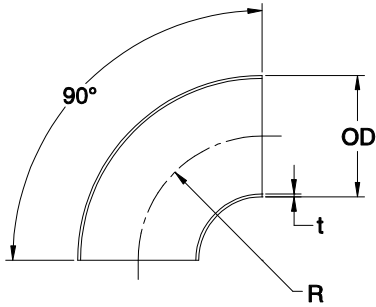
180 Degree Bends (1.5" to 3"):



Part No.	Description	A (O/D)	B	C	CLR	t
U023818/R	Bend	38.0	120	76	60	1.5
U024218/R	Bend	42	150	84	75	1.5
U024518/R	Bend	44.5	150	160	75	1.5
U024818/R	Bend	48	150	96	75	1.5
U025118/R	Bend	50.8	170	160	85	1.5
U026018R*	Bend	60.3	200	120	100	1.5
U026318/R	Bend	63.5	200	160	100	1.5
U027618/R	Bend	76.1	240	160	120	1.5
<i>Tolerance</i>		$\pm 0.1mm$	$\pm 4mm$	$\pm 5mm$	$\pm 2mm$	$\pm 0.1mm$

*stainless steel only

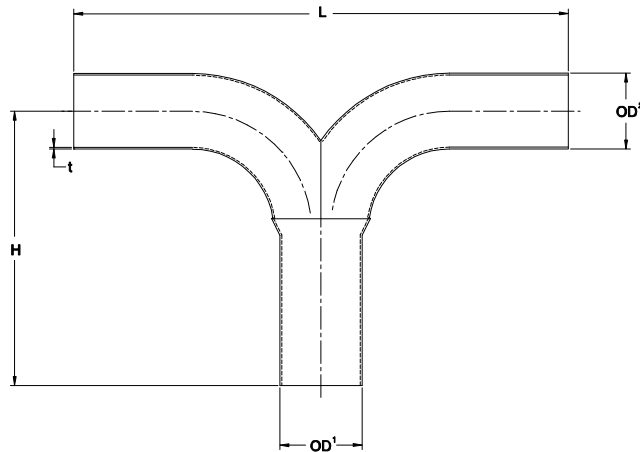
Bends (tight) (1.5" to 5"):



Part No.	Description	O/D	R	t
U033890/R	Tight bend 1.5"	38.0	42	1.5
U034590/R	Tight bend 1 3/4"	44.5	48	1.5
U035190/R	Tight bend 2"	50.8	52	1.5
U035790R*	Tight bend 2 1/4"	57.0	58	1.5
U036390/R	Tight bend 2 1/2"	63.5	63	1.5
U037090R*	Tight bend 2.75"	70.0	62	1.5
U037690/R	Tight bend 3"	76.1	62	1.5
U038990/R	Tight bend 3 1/2"	88.9	76	1.5
U030290/R	Tight bend 4"	101.6	85	1.5
U032790/R	Tight bend 4 1/2"	127.0	100	2.0
<i>Tolerance</i>		$\pm 2mm$	$\pm 1mm$	$\pm 0.1mm$

*stainless steel only

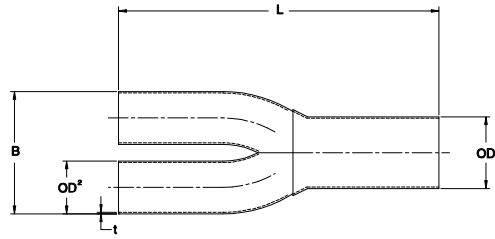
T Pieces (2.5" to 3.5"):



Part No.	Description	H	L	OD1	OD2	t
U916351/R	T Pipe	180	350	63.5	50.8	1.5
U916363/R	T Pipe	190	370	63.5	63.5	1.5
U917663/R	T Pipe	170	360	76.1	63.5	1.5
U917676R*	T Pipe	250	420	76.1	76.1	1.5
U918976R*	T Pipe	250	420	88.9	76.1	1.5
<i>Tolerance</i>		$\pm 20mm$	$\pm 10mm$	$\pm 0.2mm$	$\pm 0.2mm$	$\pm 0.1mm$

* stainless steel only

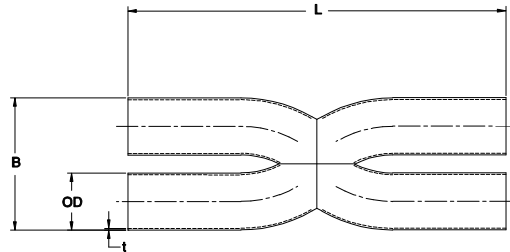
Y Pieces (2" to 4"):



Part No.	Description	B	L	OD1	OD2	t
U905142^	Y Pipe 2"	95	320	50.8	42	1.5
U905145/R	Y Pipe 2"	100	320	50.8	44.5	1.5
U905151/R	Y Pipe 2"	115	325	50.8	50.8	1.5
U905745^	Y Pipe 2.25"	100	320	57	44.5	1.5
U905748^	Y Pipe 2.25"	110	320	57	48	1.5
U906348^	Y Pipe 2.5"	110	320	63.5	48	1.5
U906351/R	Y Pipe 2.5"	115	315	63.5	50.8	1.5
U906363/R	Y Pipe 2.5"	140	320	63.5	63.5	1.5
U907663/R	Y Pipe 3"	140	325	76.1	63.5	1.5
U907676R*	Y Pipe 3"	165	380	76.1	76.1	1.5
U908976R*	Y Pipe 3.5"	170	380	88.9	76.1	1.5
U900289R*	Y Pipe 4"	200	400	101.6	88.9	1.5
	Tolerance	±5mm	±10mm	±0.2mm	±0.2mm	±0.1mm

^ mild steel only
* stainless steel only

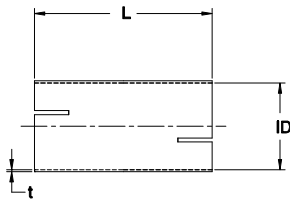
X Pieces (2" to 3"):



Part no.	Description	B	L	OD	t
U9051XR*	X Pipe	120	375	50.8	1.5
U9063XR*	X Pipe	140	380	63.5	1.5
U9076XR*	X Pipe	165	480	76.1	1.5

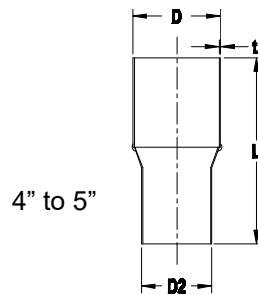
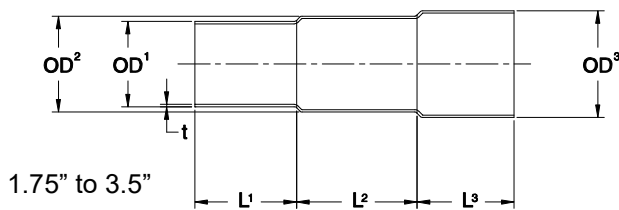
* stainless steel only

Double Ended Sleeves (1.75" to 5"):



Part No.	Description	ID	L	t
U064500/R	Double-ended sleeve 44.5	44.8	100	1.5
U064800	Double-ended sleeve 48	48.3	100	1.5
U065120/100R	Double-ended sleeve 50.8	51.1	100	1.5
U066320/300R	Double-ended sleeve 63.5	63.8	150 ^{**}	1.5
U067620/600R	Double-ended sleeve 76.1	76.4	190 ^{***}	1.5
U068900/R	Double-ended sleeve 88.9	89.3	190	1.5
U060200/R	Double-ended sleeve	102.1	220	1.5
U062700/R	Double-ended sleeve	127.5	260	2.0
<i>Tolerance</i>		$\pm 0.2\text{mm}$	$\pm 2\text{mm}$	$\pm 0.1\text{mm}$
^{**} Stainless version L=120mm				
^{***} Stainless version L=150mm				

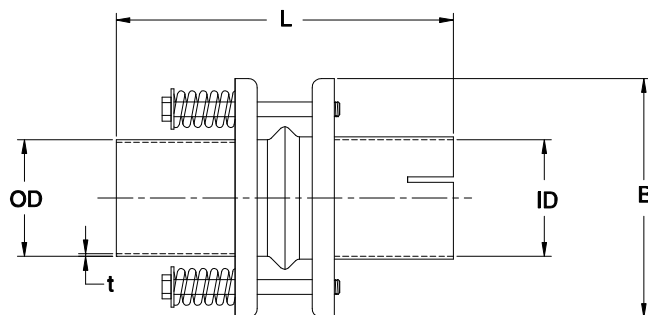
Stepped Sleeves (1.75" to 5"):



[^]slotted end
I/D=101.6mm

Part No.	Description	OD1	OD2	OD3	L1	L2	L3	D	D2	L
U074500/R	(2 step) Stepped sleeve 38	42	44.5	50	50	50	60	-	-	160
U075115/100R	(2 step) Stepped sleeve 41	48	50.8	40	55	65	-	-	-	160
U076320/300R	(2 step) Stepped sleeve 50.8	57	63.5	60	75	55	-	-	-	190
U077600/R	(2 step) Stepped sleeve 63.5	67	76.1	65	65	65	-	-	-	195
U078900/R	(2 step) Stepped sleeve 76.1	80	88.9	65	65	65	-	-	-	195
U070200/R	(1 step) Stepped sleeve -	-	-	-	-	-	-	101.6	88.9	200
U070726	(1 step) Stepped sleeve -	-	-	-	-	-	-	105 [^]	76.1	140
U072700/R	(1 step) Stepped sleeve -	-	-	-	-	-	-	127.0	101.6	270
<i>Tolerance</i>		$\pm 0.2\text{mm}$	$\pm 0.2\text{mm}$	$\pm 0.2\text{mm}$	$\pm 5\text{mm}$	$\pm 5\text{mm}$	$\pm 5\text{mm}$	$\pm 5\text{mm}$	$\pm 5\text{mm}$	$\pm 5\text{mm}$

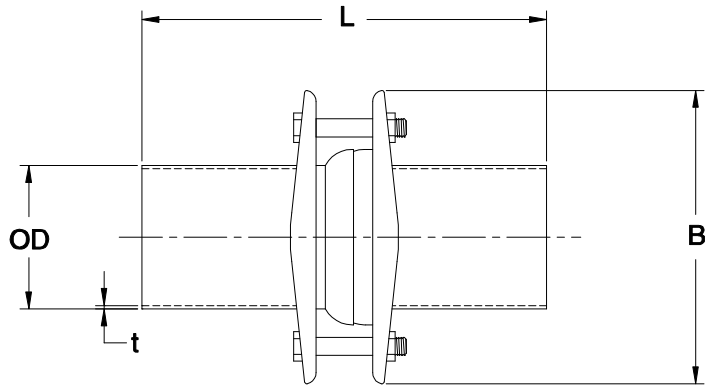
Compensators (2" to 3"):



Part No.	Description	O/D	I/D	L	B	t
U055100	Compensator 51	50.8	51.1	200	135	1.5
U056300	Compensator 63	63.5	63.8	185	135	1.5
U057600*	Compensator 76	76.1	76.4	185	145	1.5
<i>Tolerance</i>		$\pm 0.1\text{mm}$	$\pm 0.2\text{mm}$	$\pm 5\text{mm}$	$\pm 5\text{mm}$	$\pm 0.1\text{mm}$

* stainless-chromium steel only

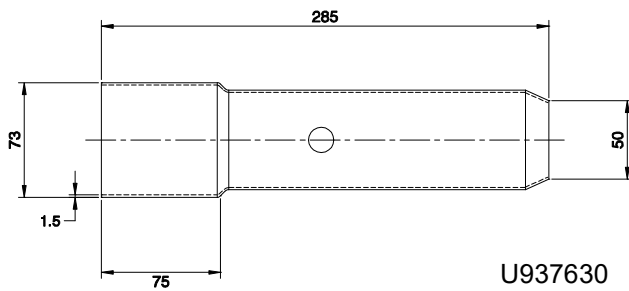
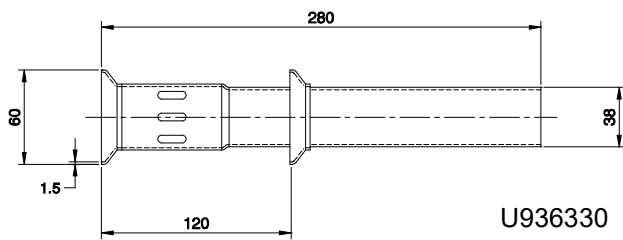
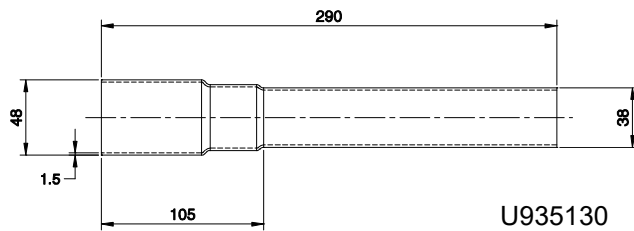
Flange Assemblies (2.5" to 3"):



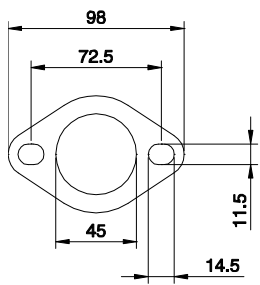
Part No.	Description	OD	L	B	t
U036301R*	Assembly 63	63.5	190	110	1.5
U037601R*	Assembly 76	76.1	190	130	1.5
	Tolerance	±0.2mm	±5mm	±5mm	±0.1mm

* stainless steel only

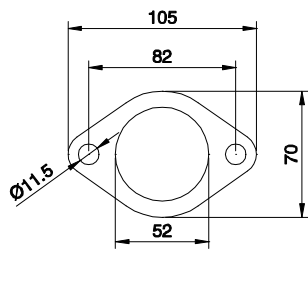
Decibel Reducers (2" to 3"):



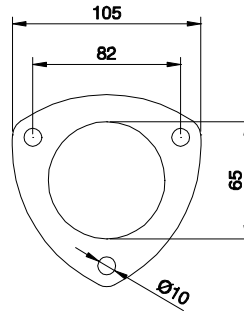
Flanges (mild steel) (1.75" to 3"):



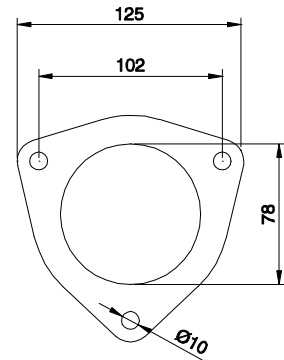
U034500



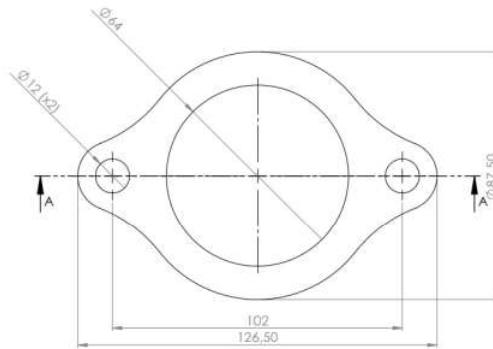
U035100



U036300

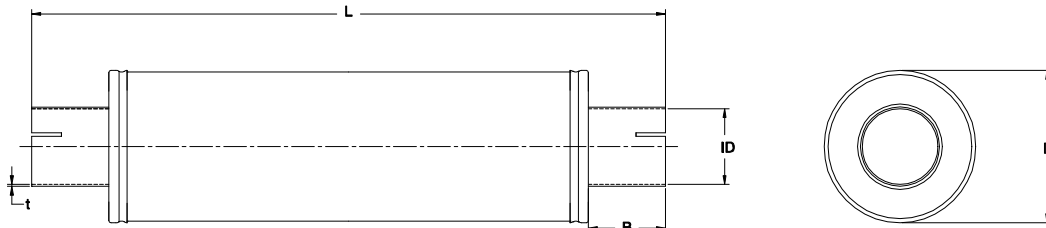


U037600



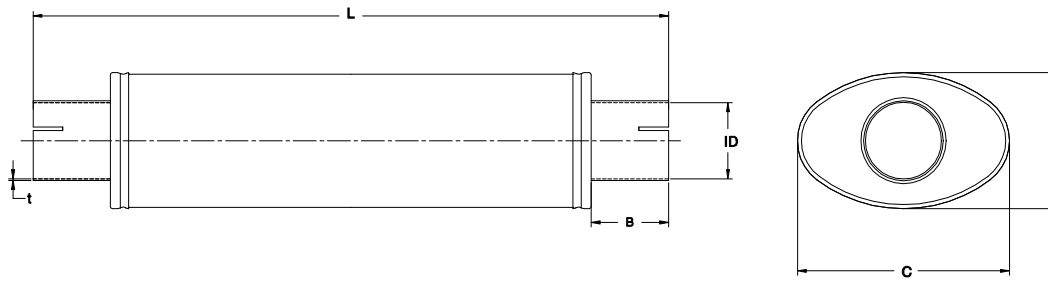
U036302

Round Silencers (1.75" to 5"):



Part No.	Description	ID	L	B	t	D
U404500/R	Micro 45	44.8	530	65	1.5	80
U414500/R	Midi 45	44.8	550	65	1.5	100
U405120/R	Micro 51	51.1	530	65	1.5	80
U415129/100R	Midi 51	51.1	550	65	1.5	100
U446300/R	Tubex	63.8	755	65	1.5	100
U456300/R	Handy	63.8	380	65	1.5	125
U436337/300R	Slim	63.8	550	65	1.5	125
U447600/R	Turbex	76.4	755	65	1.5	125
U457600/R	Turbonett	76.4	380	65	1.5	125
U458900/R	Grandonett	89.3	400	75	1.5	140
U440200/R	Turbex XL	102.1	830	100	1.5	200
U430200/R	Grandonett XL	102.1	480	100	1.5	300
U442700/R	Turbex XXL	127.5	830	120	2.0	200
U432700/R	Grandonett XXL	127.5	480	120	2.0	300
	Tolerance	±0.2mm	±10mm	±5mm	±0.1mm	±3mm

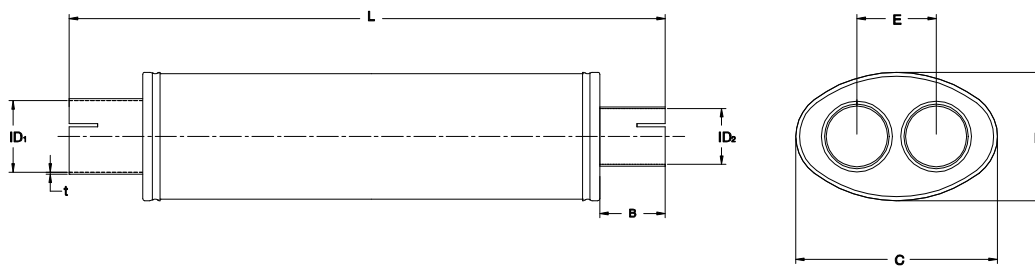
Oval Silencers (1.75" to 3.5"):



Part No.	Description	ID	L	B	t	H	C
U334500/R	Medium 45	44.8	550	65	1.5	100	165
U355124/100R	Small	51.1	450	65	1.5	100	165
U335139/100R	Medium 51	51.1	550	65	1.5	100	165
U325100/R	Big 51	51.1	550	65	1.5	115	185
U316335/300R	Super	63.8	450	65	1.5	115	185
U326340/300R	Big 63	63.8	550	65	1.5	115	185
U336300/R	Heavy	63.8	630	65	1.5	140	220
U307600/R	Turbotight	76.4	380	65	1.5	140	220
U337600/R	Turbolight	76.4	550	65	1.5	140	220
U327600/R	Turbo*	76.4	630	65	1.5	140	220
U328900/R	Grand	89.3	650	75	1.5	140	220
U308900/R	Grandotight	89.3	400	75	1.5	140	220
<i>Tolerance</i>		$\pm 0.2\text{mm}$	$\pm 10\text{mm}$	$\pm 5\text{mm}$	$\pm 0.1\text{mm}$	$\pm 3\text{mm}$	$\pm 3\text{mm}$

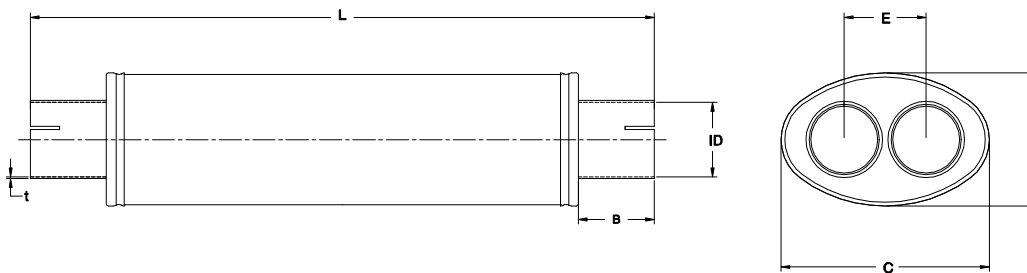
*One of the sleeves is off centre by 50mm

Oval 1 in 2 out Silencers (2.5" to 3"):



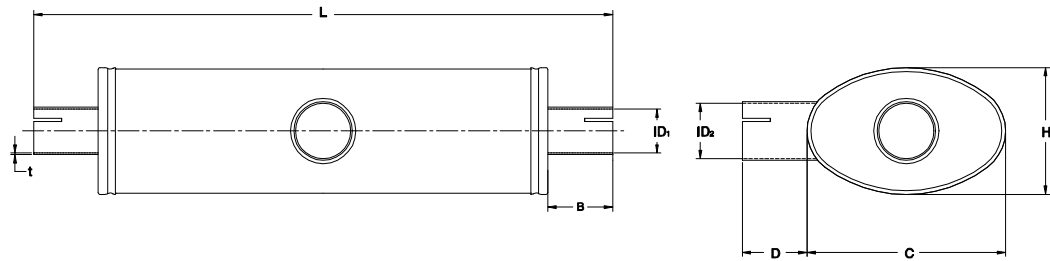
Part No.	Description	ID1	ID2	L	B	t	H	C	E
U346351/R	Split 63	63.8	51.1	450	65	1.5	115	185	80
U347663/R	Split 76	76.4	63.8	450	65	1.5	140	220	100
<i>Tolerance</i>		$\pm 0.2\text{mm}$	$\pm 0.2\text{mm}$	$\pm 10\text{mm}$	$\pm 5\text{mm}$	$\pm 0.1\text{mm}$	$\pm 3\text{mm}$	$\pm 3\text{mm}$	$\pm 3\text{mm}$

Oval 2 in 2 out Silencers (Stainless Steel Only) (2" to 3"):



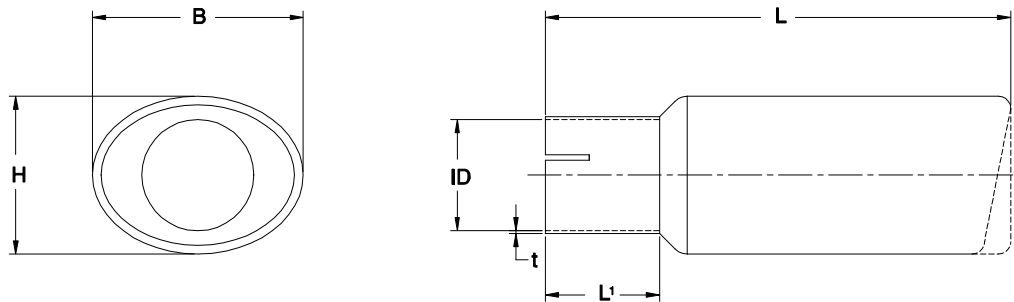
Part No.	Description	ID	L	B	t	H	C	E
U3451DR	Duo 51	51.1	450	65	1.5	115	185	75
U3463DR	Duo 63	63.8	450	65	1.5	115	185	80
U3476DR	Duo 76	76.4	450	65	1.5	140	220	95
<i>Tolerance</i>		$\pm 0.2\text{mm}$	$\pm 10\text{mm}$	$\pm 5\text{mm}$	$\pm 0.1\text{mm}$	$\pm 3\text{mm}$	$\pm 3\text{mm}$	$\pm 3\text{mm}$

Oval Transverse Duplex Silencers (Stainless Steel Only) (2.5" to 3"):



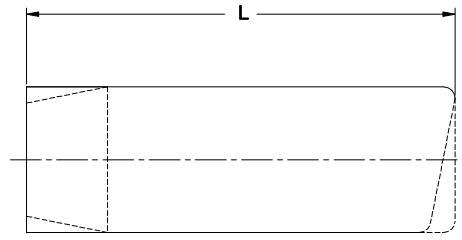
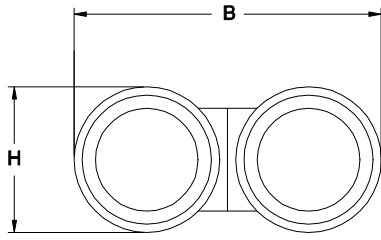
Part No.	Description	ID1	ID2	L	B	t	H	C	D
U326351R	Duplex 63-51	51.1	63.8	630	65	1.5	140	220	65
U327663R	Duplex 76-63	63.8	76.4	630	65	1.5	140	220	65
	<i>Tolerance</i>	$\pm 0.2mm$	$\pm 0.2mm$	$\pm 10mm$	$\pm 5mm$	$\pm 0.1mm$	$\pm 3mm$	$\pm 3mm$	$\pm 3mm$

Tailpipes (1.75" to 3.5"):



Part No.	Description	ID	L	L1	t	H	B	Type
U254500	Rondo 45	45.8	260	30	1.5	70	70	Round
U235100	Ellips 51	51.1	235	65	1.5	70	90	Oval
U255100	Rondo 51	51.1	275	65	1.5	70	70	Round
U255110	Rondo XL 51	51.1	265	65	1.5	100	100	Round
U236300	Ellips 63	63.8	275	65	1.5	70	90	Oval
U23630L	Ellips 63 Left	63.8	230	65	1.5	90	120	Oval
U23630R	Ellips 63 Right	63.8	230	65	1.5	90	120	Oval
U236310	Ellips XL 63	63.8	255	65	1.5	90	120	Oval
U236320	Superior 63	63.8	260	65	1.5	90	140	Oval
U246300	Quattro 63	63.8	265	65	1.5	70	90	Square Oval
U256300	Rondo 63	63.8	275	65	1.5	80	80	Round
U256310	Rondo XL 63	63.8	265	65	1.5	100	100	Round
U266300	Bold 63	63.8	245	65	1.5	85	150	Flat Oval
U237600	Ellips 76	76.4	270	65	1.5	90	120	Oval
U237620	Superior 76	76.4	260	65	1.5	90	140	Oval
U257600	Rondo 76	76.4	245	65	1.5	100	100	Round
U257610	Rondo XL 76	76.4	255	65	1.5	114	114	Round
U267600	Bold 76	76.4	245	65	1.5	85	150	Flat Oval
U258910	Rondo XL 89	89.3	260	65	1.5	114	114	Round
	<i>Tolerance</i>	$\pm 0.2mm$	$\pm 5mm$	$\pm 5mm$	$\pm 0.1mm$	$\pm 2mm$	$\pm 2mm$	

Weldable Tailpipes (2.5"):



Part No.	Description	L	H	B
U176300	Twin 'Rondo'	240	80	170
	<i>Tolerance</i>	$\pm 5mm$	$\pm 2mm$	$\pm 5mm$