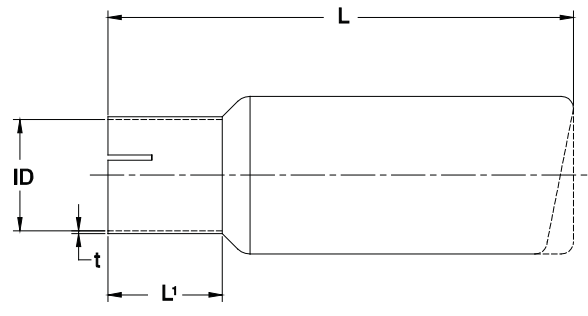
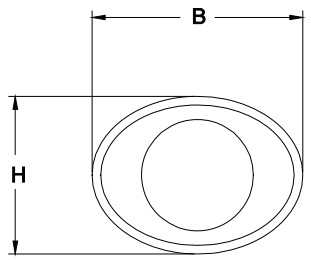


Tailpipes:



Part No.	Description	ID	L	L1	t	H	B	Type
U254500	Rondo 45	45.8	260	30	1.5	70	70	Round
U235100	Ellips 51	51.1	235	65	1.5	70	90	Oval
^U245100	Quattro 51	51.1	245	65	1.5	70	90	Square Oval
U255100	Rondo 51	51.1	275	65	1.5	70	70	Round
U255110	Rondo XL 51	51.1	265	65	1.5	100	100	Round
U265100	Bold 51	51.1	245	65	1.5	85	150	Oval
U236300	Ellips 63	63.8	275	65	1.5	70	90	Oval
U23630L	Ellips 63 Left	63.8	230	65	1.5	90	120	Oval
U23630R	Ellips 63 Right	63.8	230	65	1.5	90	120	Oval
U236310	Ellips XL 63	63.8	255	65	1.5	90	120	Oval
U236320	Superior 63	63.8	260	65	1.5	90	140	Oval
U246300	Quattro 63	63.8	265	65	1.5	70	90	Square Oval
U256300	Rondo 63	63.8	275	65	1.5	80	80	Round
U256310	Rondo XL 63	63.8	265	65	1.5	100	100	Round
^U256320	Rondo 63 JAP	63.8	300	65	1.5	100	100	Round
U266300	Bold 63	63.8	245	65	1.5	85	150	Flat Oval
U237600	Ellips 76	76.4	270	65	1.5	90	120	Oval
U237620	Superior 76	76.4	260	65	1.5	90	140	Oval
U257600	Rondo 76	76.4	245	65	1.5	100	100	Round
U257610	Rondo XL 76	76.4	255	65	1.5	114	114	Round
U267600	Bold 76	76.4	245	65	1.5	85	150	Flat Oval
U258910	Rondo XL 89	89.3	260	65	1.5	114	114	Round
	<i>Tolerance</i>	$\pm 0.2mm$	$\pm 5mm$	$\pm 5mm$	$\pm 0.1mm$	$\pm 2mm$	$\pm 2mm$	

^ WHILE STOCKS LAST